

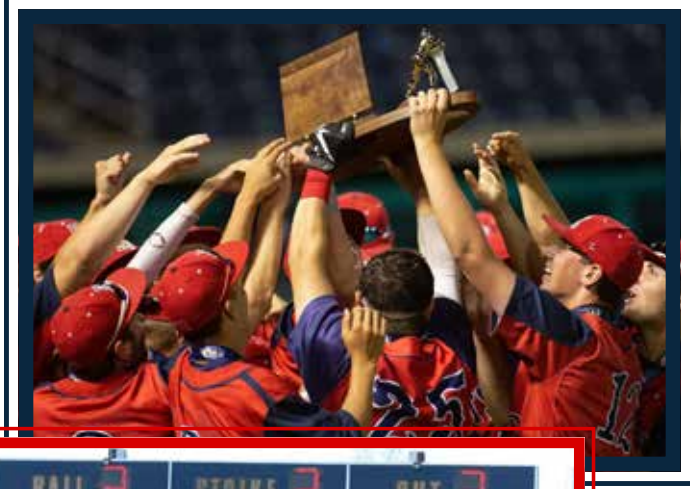
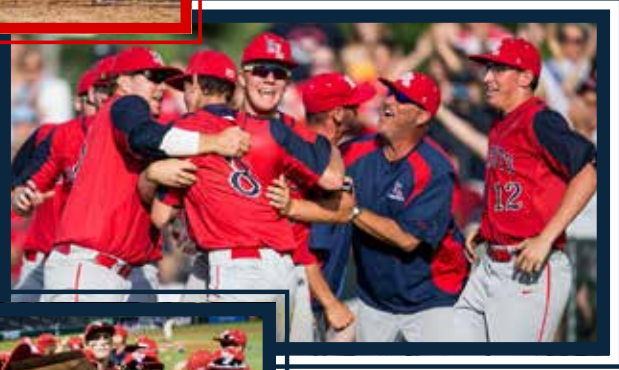
RED LAND HIGH SCHOOL

560 Fishing Creek Road

Lewisberry, PA 17339

(717) 938.6561

@RedLandHS @RedLand_AD #RLHSPatriotPride



RED LAND HIGH SCHOOL CAPITAL CAMPAIGN



RED LAND CAPITAL CAMPAIGN

On the heels of the Red Land High School Baseball team winning their third consecutive Mid-Penn Commonwealth Division Championship, as well as the 2019 State 5A Championship, upgrades to our baseball and softball facilities are essential.

In keeping with the tradition it is our intention to continue our success by allowing student athletes to pursue their athletic and academic goals. In order to better meet their needs our vision is to provide the teams with an indoor facility allowing them to practice year-round. This would include the purchase of equipment as well as the further development of space suitable for our growing competitive programs. An area that would be identified is the relocation of the backstop to make play more competitive. Additionally, we wish to improve the viewing experience by expanding spectator seating, creating a formal press box, and constructing a new concession stand.

All donation amounts will be accepted and appreciated. Red Land All Sports Boosters Association is a nonprofit 501(c) 3 organization; as such, your donation is tax deductible. Our tax ID number is 743191422.

Please contact us with your questions;

DONNA CHRISTIANSEN

Treasurer, All Sports Boosters Association
(717) 554.2279
ddchristiansen2525@gmail.com

MELISSA HERBERT

Principal, Red Land High School
(717) 938.6561
mherbert@wssd.k12.pa.us

TOM PEIFER

Athletic Director, Red Land High School
Project Manager
(717) 938.6561
tpeifer@wssd.k12.pa.us

NATE EBBERT

Red Land Baseball Coach
(717) 938.6561
nebbert@wssd.k12.pa.us

MADELYN YANNETTI

Red Land Softball Coach
(717) 938.6561
myannetti@wssd.k12.pa.us



CONTACTS



SPONSORSHIP

GRAND SLAM \$10,000 and above

- 1-year sign on the outfield fence with discounted renewal option
- Name recognition with logo on the batting facility
- Full page ad in the baseball program
- West Shore Sports Pass for a year (x4)

HOMERUN \$5,000

- Name recognition with logo on the batting facility
- Half page ad in the baseball program
- West Shore Sports Pass for a year (x2)
- \$500 discount on the outfield fence sign

TRIPLE \$2,500

- Name recognition on the batting facility
- Quarter page ad in the baseball program
- Red Land Sports Pass for a year (x4)
- \$500 discount on the outfield fence sign

DOUBLE \$1,000

- Name recognition on the batting facility
- Name in the baseball program
- Red Land Sports Pass for a year (x2)

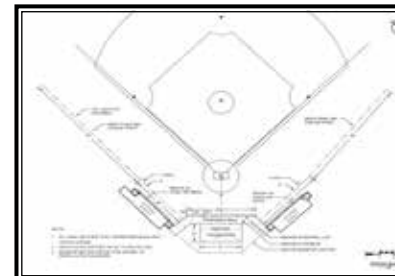
SINGLE \$500

- Name recognition on the batting facility
- Name in the baseball program

BACK STOP IMPROVEMENTS

Phase 1 of improvements will focus on our late 1960's baseball backstop. These improvements will include;

- Moving the backstop closer to the home plate.
- Building a new backstop wall and removable net system.
- Removing existing fencing attached to the dug outs, and extending out-of-play fencing down first and third baselines.
- Extend fencing along both out-of-play lines.



PHASE 1



PRESS BOX, STORAGE AREA & BULLPENS

Phase 2 of improvements will focus on field improvements.

These improvements will include;

- Constructing a building that will include;
 - A press box
 - Storage for baseball equipment
- Constructing bullpens with fencing be-side both the 1st base and 3rd base dugouts.

Press Box/Storage Shed



Bullpens

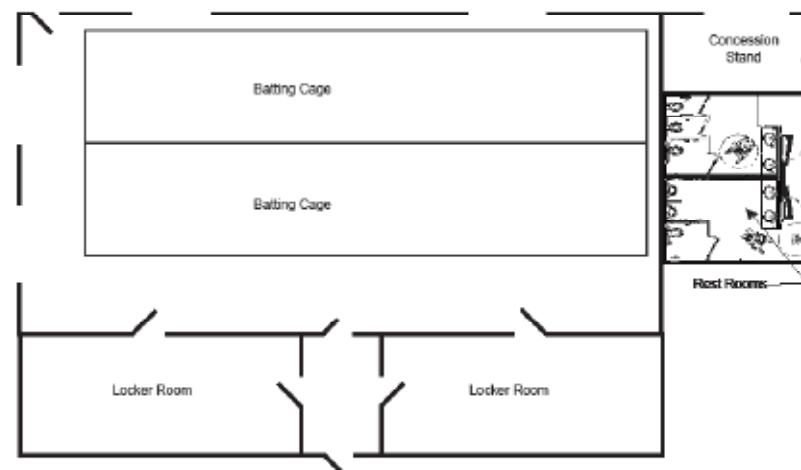


INDOOR BATTING FACILITY

Phase 3 of improvements will focus on the construction of an indoor batting facility. These improvements will include;

- Two indoor batting cages
- Team locker rooms
- Restrooms
- Concession Stand
- WI-Fi, indoor sound system, heating and air conditioning.

Batting Facility



Batting area is 40'x60' with 2 batting cages 14'x70'. The boys and girls locker rooms are 15'x30'. Each rest room is 10'x20'. The concession stand is 10'x20'.



PHASE 2

PHASE 3