



West Shore School District

Survey Update

September 15, 2016

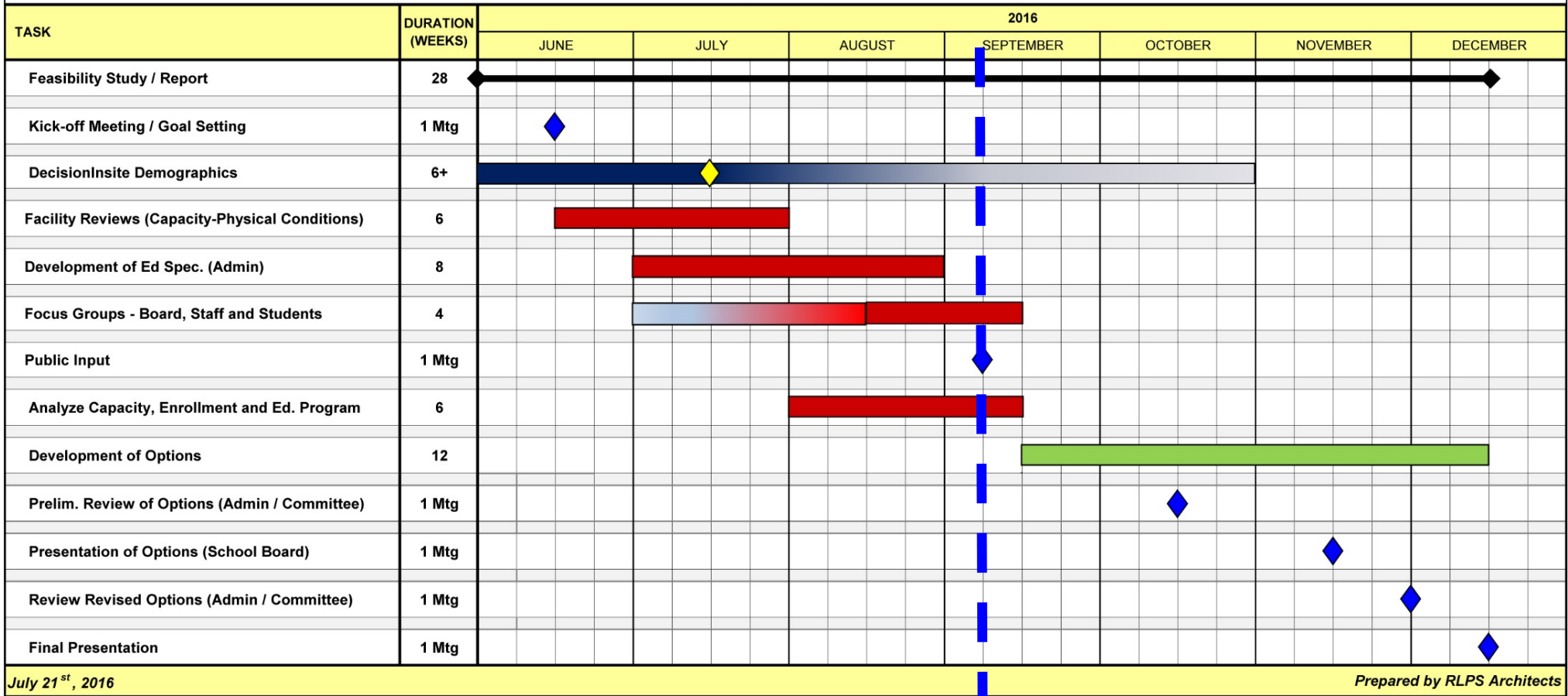
Goals

- The feasibility study will result in a comprehensive list of needs as well as an actionable plan to address those needs.
 - That plan will be realistic and will include the financial means needed to support it.
 - The plan will be designed to move the District forward instructionally and build the schools that meet the needs of the class of 2029.
- The first major construction project will be “shovel ready” for the 2018 calendar year.
- Every single student in the West Shore School District will attend classes in a climate controlled environment by the time the plan has been fully executed.

Update

- Educational Specifications: Near Completion
- Facilities Analysis: Near Completion
- Demographics Study: Completed
- Board Update: September 15, 2016
- Next Committee Meeting: September 22, 2016
- Additional Focus Groups: Fall 2016

West Shore School District Feasibility Study Schedule



Building: FAIR

Systems: **POOR**

Fairview E.S.

Fairview Elementary School

Grade	2 LS					1 K					10 CR				
	2012	2013	2014	2015	2016	2017	2018	2019	2020	2021	2022	2023	2024	2025	
K	28	35	26	31	32	32	32	32	32	32	31	31	31	30	
1	45	33	39	38	36	37	37	37	37	37	37	36	36	36	
2	48	49	31	43	40	37	38	39	38	38	38	37	37	37	
3	47	48	43	35	44	41	39	39	39	39	39	38	38	38	
4	46	44	45	44	34	44	40	38	39	39	39	39	38	38	
5	40	48	45	49	46	36	46	42	39	40	40	40	40	39	
Subtotals:	254	257	229	240	232	227	232	227	224	225	224	221	220	218	
Pct Chg:		1.2%	-10.9%	4.8%	-3.3%	-2.2%	2.2%	-2.2%	-1.3%	0.4%	-0.4%	-1.3%	-0.5%	-0.9%	
SDC:	0	0	0	0	0	0	0	0	0	0	0	0	0	0	
Totals:	254	257	229	240	232	227	232	227	224	225	224	221	220	218	
Capacity:	0	0	0	0	260	260	260	260	260	260	260	260	260	260	
Open Seats:	-254	-257	-229	-240	28	33	28	33	36	35	36	39	40	42	

Security Issues

- Exterior door to each classroom
- Controlled access/ entrance direct to admin suite

Inefficient windows & doors

- Minimal capacity (260 students)
- Technology updates; smartboards
- Finishes are worn and dated
- Inadequate clock/ bell system

Electrical system issues

- Minimal/ poor emergency lighting
- Outdated fire alarm
- Inadequate intercom system
- Outdated exit signage
- No automatic lighting control

Inadequate mechanical systems

- No sprinkler system
- Relief air systems are not up to standards
- Poor site lighting
- Major issues with generator

Building: **POOR**

Systems: **POOR**

Fishing Creek E.S.

Fishing Creek Elementary School

Grade	4 LS				2 K				20 CR					
	2012	2013	2014	2015	2016	2017	2018	2019	2020	2021	2022	2023	2024	2025
K	71	85	76	75	78	79	80	80	79	78	77	76	76	75
1	92	73	75	73	76	79	80	81	81	80	79	78	78	77
2	73	79	74	84	75	79	82	83	82	82	81	81	80	79
3	106	75	74	77	85	78	80	83	84	83	83	82	81	80
4	73	103	75	73	77	85	78	80	83	84	83	83	82	81
5	92	78	106	78	76	80	88	80	81	85	85	84	84	83
Subtotals:	507	493	480	460	467	480	488	487	490	492	488	484	481	475
Pct Chg:		-2.8%	-2.6%	-4.2%	1.5%	2.8%	1.7%	-0.2%	0.6%	0.4%	-0.8%	-0.8%	-0.6%	-1.2%
SDC:	0	0	0	0	0	0	0	0	0	0	0	0	0	0
Totals:	507	493	480	460	467	480	488	487	490	492	488	484	481	475
Capacity:	0	0	0	0	520	520	520	520	520	520	520	520	520	520
Open Seats:	-507	-493	-480	-460	53	40	32	33	30	28	32	36	39	45

- Security Issues
 - 2 buildings w/ connection corridor
 - No controlled access/ entrance direct to admin suite
- Inefficient windows & doors
- Accessibility issues throughout; limited access to certain areas
- Technology updates; smartboards
- Finishes are worn and dated
- Inadequate clock/ bell system
- Poor site lighting
- Electrical system issues
 - Minimal/ poor emergency lighting
 - Outdated fire alarm
 - Inadequate intercom system
 - No automatic lighting control
- Inadequate mechanical systems
 - Old and inefficient
 - Failing at some locations
 - Evidence of rust
 - Relief air systems not to standards
- 2 separate failing electrical services
- No sprinkler system

Building: **GOOD**

Systems: **GOOD**

Highland E.S.

Highland Elementary School

Grade	1 LS									2 K			20 CR		
	2012	2013	2014	2015	2016	2017	2018	2019	2020	2021	2022	2023	2024	2025	
K	65	79	64	61	66	65	65	65	64	63	63	62	61	61	
1	86	80	86	71	69	76	74	74	74	73	72	71	71	70	
2	96	88	80	91	72	70	76	75	74	74	73	72	72	71	
3	82	97	88	84	92	72	70	77	75	74	74	73	73	72	
4	71	79	96	86	82	89	70	68	75	74	73	73	72	71	
5	67	78	79	95	88	83	91	71	69	76	75	74	74	73	
Subtotals:	467	501	493	488	469	455	446	430	431	434	430	425	423	418	
Pct Chg:		7.3%	-1.6%	-1%	-3.9%	-3%	-2%	-3.6%	0.2%	0.7%	-0.9%	-1.2%	-0.5%	-1.2%	
SDC:	0	0	0	0	0	0	0	0	0	0	0	0	0	0	
Totals:	467	501	493	488	469	455	446	430	431	434	430	425	423	418	
Capacity:	0	0	0	0	520	520	520	520	520	520	520	520	520	520	
Open Seats:	-467	-501	-493	-488	51	65	74	90	89	86	90	95	97	102	

- Potential energy efficiency upgrades
 - Occupancy Sensors
 - LED fixtures
 - Gym lighting
- Minor leak issues at piping connections
- Technology updates; smartboards
- Need flexibility in teaching styles

Building: **GOOD**

Systems: **GOOD**

Hillside E.S.

Hillside Elementary School

Grade	1 LS										3 K		20 CR		
	2012	2013	2014	2015	2016	2017	2018	2019	2020	2021	2022	2023	2024	2025	
K	85	104	100	76	88	88	89	89	88	87	86	85	84	83	
1	103	94	115	112	86	100	100	100	100	99	98	97	96	95	
2	87	103	94	110	112	86	100	100	100	100	99	98	97	97	
3	104	87	96	93	108	110	84	98	99	99	99	98	97	96	
4	122	103	87	98	94	109	110	85	98	100	100	100	99	98	
5	108	120	101	88	100	96	111	113	86	99	101	101	101	100	
Subtotals:	609	611	593	577	588	589	594	585	571	584	583	579	574	569	
Pct Chg:		0.3%	-2.9%	-2.7%	1.9%	0.2%	0.8%	-1.5%	-2.4%	2.3%	-0.2%	-0.7%	-0.9%	-0.9%	
SDC:	0	0	0	0	0	0	0	0	0	0	0	0	0	0	
Totals:	609	611	593	577	588	589	594	585	571	584	583	579	574	569	
Capacity:	0	0	0	0	540	540	540	540	540	540	540	540	540	540	
Open Seats:	-609	-611	-593	-577	-48	-49	-54	-45	-31	-44	-43	-39	-34	-29	

- Site lighting has been damaged (underground wiring)
- Additional playground needs
- Potential energy efficiency upgrades
 - Occupancy Sensors
 - LED fixtures
 - Gym lighting
- Domestic hot water circulation issues
- Technology updates; smartboard
- Need flexibility in teaching styles

Building: **POOR**

Systems: **POOR**

Lower Allen E.S.

Lower Allen Elementary School

Grade	1 LS									2 K		8 CR			
	2012	2013	2014	2015	2016	2017	2018	2019	2020	2021	2022	2023	2024	2025	
K	60	56	54	55	62	70	75	76	77	77	79	79	79	79	
1	71	66	60	59	67	75	80	81	82	83	84	84	84	85	
2	62	68	70	60	66	75	80	81	82	83	85	85	85	85	
Subtotals:	193	190	184	174	195	220	235	238	241	243	248	248	248	249	
Pct Chg:		-1.6%	-3.2%	-5.4%	12.1%	12.8%	6.8%	1.3%	1.3%	0.8%	2.1%	0%	0%	0.4%	
SDC:	0	0	0	0	0	0	0	0	0	0	0	0	0	0	
Totals:	193	190	184	174	195	220	235	238	241	243	248	248	248	249	
Capacity:	0	0	0	0	230	230	230	230	230	230	230	230	230	230	
Open Seats:	-193	-190	-184	-174	35	10	-5	-8	-11	-13	-18	-18	-18	-19	

- Inefficient windows & doors
- Minimal capacity (230 students)
- Outdated/ antiquated technology
- Finishes are worn and dated
- Asbestos tile on the walls; needs abated
- Inadequate clock/ bell system
- Poor site lighting
- Handicap accessibility issues
 - Bathrooms
 - Entries
- Electrical system issues
 - Minimal/ poor emergency lighting
 - Outdated fire alarm
 - Inadequate intercom system
 - Outdated exit signage
 - No automatic lighting control
- Inadequate mechanical systems
- No sprinkler system
- Poor electrical service
- Boilers need replaced
- Rusting issues

Building: **POOR**

Systems: **POOR**

Newberry E.S.

Newberry Elementary School

Grade	5 LS					2 K		16 CR						
	2012	2013	2014	2015	2016	2017	2018	2019	2020	2021	2022	2023	2024	2025
K	63	51	57	39	45	44	44	44	43	43	43	42	42	41
1	65	63	50	65	42	49	48	47	47	47	46	46	45	45
2	66	60	66	61	69	45	52	51	49	49	48	48	47	47
3	68	62	59	67	60	68	44	51	50	48	48	48	47	47
4	54	68	64	62	68	61	69	45	52	51	49	49	48	48
5	61	54	65	70	62	68	60	69	44	51	51	49	49	48
Subtotals:	377	358	361	364	346	335	317	307	285	289	285	282	278	276
Pct Chg:		-5%	0.8%	0.8%	-4.9%	-3.2%	-5.4%	-3.2%	-7.2%	1.4%	-1.4%	-1.1%	-1.4%	-0.7%
SDC:	0	0	0	0	0	0	0	0	0	0	0	0	0	0
Totals:	377	358	361	364	346	335	317	307	285	289	285	282	278	276
Capacity:	0	0	0	0	450	450	450	450	450	450	450	450	450	450
Open Seats:	-377	-358	-361	-364	104	115	133	143	165	161	165	168	172	174

- Inefficient windows & doors
- Outdated/ antiquated technology
- Finishes are worn and dated
- Inadequate clock/ bell system
- Poor site lighting
- Poor building envelope; drainage issues around the building
- Stucco finish issues; drainage and water infiltration
- Site drainage issues
- Poor site circulation
- Electrical system issues
 - Minimal/ poor emergency lighting
 - Outdated fire alarm
 - Inadequate intercom system
 - Outdated exit signage
 - No automatic lighting control
- Inadequate mechanical systems
- No sprinkler system
- Poor electrical service
- Relief air systems not to standards
- Rusting of components

Building: **GOOD/ FAIR**

Systems: **FAIR/ POOR**

Red Mill E.S.

Red Mill Elementary School

Grade	4 LS				2 K				26 CR					
	2012	2013	2014	2015	2016	2017	2018	2019	2020	2021	2022	2023	2024	2025
K	88	98	96	74	90	90	90	91	90	89	88	87	87	86
1	99	90	109	105	78	94	94	94	94	93	93	92	91	90
2	118	103	91	108	108	80	98	97	95	95	95	94	93	92
3	82	116	99	97	111	110	82	100	98	96	96	95	94	93
4	93	79	108	101	96	110	109	82	99	97	96	96	95	94
5	104	97	79	105	102	97	111	111	82	99	98	96	96	95
Subtotals:	584	583	582	590	585	581	584	575	558	569	566	560	556	550
Pct Chg:		-0.2%	-0.2%	1.4%	-0.8%	-0.7%	0.5%	-1.5%	-3%	2%	-0.5%	-1.1%	-0.7%	-1.1%
SDC:	0	0	0	0	0	0	0	0	0	0	0	0	0	0
Totals:	584	583	582	590	585	581	584	575	558	569	566	560	556	550
Capacity:	0	0	0	690	660	660	660	660	660	660	660	660	660	660
Open Seats:	-584	-583	-582	-590	75	79	76	85	102	91	94	100	104	110

- Building shows wear and tear on finishes
- Curriculum needs/ flexibility
- High humidity issues in building
- Relief air systems not to standards
- Potential energy efficiency upgrades
 - Occupancy Sensors
 - LED fixtures
 - Gym lighting
- Electrical system issues
 - Outdated exit signage
 - Outdated smoke detection/ fire alarm system
 - Limited emergency power
 - No automatic lighting control
- Mechanical systems are fair; at end of life
- Staining/ soot at roof for boiler flues
- Domestic water valves are failing
- Rust issues throughout
- Missing lightning protection

Building: FAIR
 Systems: POOR

Rossmoyne E.S.

Rossmoyne Elementary School

Grade	Rossmoyne Elementary School														
	2012	2013	2014	2015	2016	2017	2018	2019	2020	2021	2022	2023	2024	2025	
3	58	65	64	72	66	72	79	81	82	83	85	85	85	85	
4	55	60	61	65	79	73	76	80	82	83	85	85	86	86	
5	69	56	59	66	72	87	78	79	82	83	85	86	87	87	
Subtotals:	182	181	184	203	217	232	233	240	246	249	255	256	258	258	
Pct Chg:		-0.5%	1.7%	10.3%	6.9%	6.9%	0.4%	3%	2.5%	1.2%	2.4%	0.4%	0.8%	0%	
SDC:	0	0	0	0	0	0	0	0	0	0	0	0	0	0	
Totals:	182	181	184	203	217	232	233	240	246	249	255	256	258	258	
Capacity:	0	0	0	0	210	210	210	210	210	210	210	210	210	210	
Open Seats:	-182	-181	-184	-203	-7	-22	-23	-30	-36	-39	-45	-46	-48	-48	

- Inefficient windows & doors
- Minimal capacity (210 students)
- Outdated/ antiquated technology
- Finishes are worn and dated
- Inadequate clock/ bell system
- Poor site lighting
- Handicap accessibility issues
 - Bathrooms
 - Entries
- Electrical system issues
 - Minimal/ poor emergency lighting
 - Outdated fire alarm
 - Inadequate intercom system
 - Outdated exit signage
 - No automatic lighting control
- Inadequate mechanical systems
- No sprinkler system
- Poor electrical service
- Mechanical distribution not at current standards
- Rusting of components

Building: **GOOD**

Systems: **GOOD**

Washington Heights E.S.

Washington Heights Elementary School

Grade	1 LS					2 K			20 CR					
	2012	2013	2014	2015	2016	2017	2018	2019	2020	2021	2022	2023	2024	2025
K	61	84	72	68	82	83	84	84	83	82	82	81	80	79
1	61	68	80	77	72	87	89	89	89	88	87	87	86	85
2	76	62	70	69	74	70	85	86	88	88	87	86	85	84
3	77	71	67	65	69	75	70	84	86	88	88	87	86	85
4	66	74	68	63	62	65	71	67	82	84	86	86	85	84
5	58	68	75	59	61	60	64	69	66	82	83	85	85	84
Subtotals:	399	427	432	401	420	440	463	479	494	512	513	512	507	501
Pct Chg:		7%	1.2%	-7.2%	4.7%	4.8%	5.2%	3.5%	3.1%	3.6%	0.2%	-0.2%	-1%	-1.2%
SDC:	0	0	0	0	0	0	0	0	0	0	0	0	0	0
Totals:	399	427	432	401	420	440	463	479	494	512	513	512	507	501
Capacity:	0	0	0	0	520	520	520	520	520	520	520	520	520	520
Open Seats:	-399	-427	-432	-401	100	80	57	41	26	8	7	8	13	19

- Potential energy efficiency upgrades

- Occupancy Sensors
- LED fixtures
- Gym lighting

- Minor mechanical system issues

- Technology updates; smartboards
- Need flexibility in teaching styles
- Domestic water plant is at the end of life

Building: FAIR
 Systems: POOR

Allen M.S.

Allen Middle School

Grade	Allen Middle School											3 SCI		22 CR	
	2012	2013	2014	2015	2016	2017	2018	2019	2020	2021	2022	2023	2024	2025	
6	158	163	156	178	199	195	196	199	189	183	192	191	190	191	
7	152	194	177	170	191	213	206	204	204	193	188	196	195	194	
8	162	177	201	171	172	193	213	204	204	203	193	187	195	194	
Subtotals:	472	534	534	519	562	601	615	607	597	579	573	574	580	579	
Pct Chg:		13.1%	0%	-2.8%	8.3%	6.9%	2.3%	-1.3%	-1.6%	-3%	-1%	0.2%	1%	-0.2%	
SDC:	0	0	0	0	0	0	0	0	0	0	0	0	0	0	
Totals:	472	534	534	519	562	601	615	607	597	579	573	574	580	579	
Capacity:	0	0	0	0	630	630	630	630	630	630	630	630	630	630	
Open Seats:	-472	-534	-534	-519	68	29	15	23	33	51	57	56	50	51	

- Inefficient windows & doors
- Outdated/ antiquated technology
- Finishes are worn and dated
- Some exterior finishes are showing wear
- Inadequate clock/ bell system
- Inefficiencies in building layout
- Handicap accessibility issues
 - Bathrooms
- Electrical system issues
 - Minimal/ poor emergency lighting
 - Outdated fire alarm
 - Inadequate intercom system
 - Outdated exit signage
 - No automatic lighting control
- Inadequate mechanical systems
- No sprinkler system
- Poor electrical service
- Limited emergency power & poor generator
- Controls system is failing
- Leaks at unit vent through wall penetrations

Building: **GOOD**

Systems: **FAIR**

Crossroads M.S.

Crossroads Middle School

Grade	5 SCI											24 CR		
	2012	2013	2014	2015	2016	2017	2018	2019	2020	2021	2022	2023	2024	2025
6	195	237	223	229	238	232	228	247	242	197	224	222	218	218
7	218	244	243	221	234	242	236	232	249	244	199	226	224	220
8	196	234	232	240	215	228	236	230	229	246	241	197	222	221
Subtotals:	609	715	698	690	687	702	700	709	720	687	664	645	664	659
Pct Chg:		17.4%	-2.4%	-1.1%	-0.4%	2.2%	-0.3%	1.3%	1.6%	-4.6%	-3.3%	-2.9%	2.9%	-0.8%
SDC:	0	0	0	0	0	0	0	0	0	0	0	0	0	0
Totals:	609	715	698	690	687	702	700	709	720	687	664	645	664	659
Capacity:	0	0	0	0	630	630	630	630	630	630	630	630	630	630
Open Seats:	-609	-715	-698	-690	-57	-72	-70	-79	-90	-57	-34	-15	-34	-29

- Finishes in some areas are showing minimal wear and tear
- Technology upgrades; smartboards
- Potential energy efficiency upgrades
 - Occupancy Sensors
 - LED fixtures
 - Gym lighting
- Electrical system issues
 - Outdated exit signage
 - Outdated smoke detection
 - Limited emergency power
 - No automatic lighting control
- Mechanical systems are fair; at end of life
- No dimmer system for auditorium house lighting
- Dimmer system at stage is very loud
- Sounds systems are antiquated

Building: **POOR**

Systems: **POOR**

New Cumberland M.S.

New Cumberland Middle School

Grade	5 SCI											23 CR		
	2012	2013	2014	2015	2016	2017	2018	2019	2020	2021	2022	2023	2024	2025
6	122	192	231	216	192	199	196	215	215	180	213	215	217	217
7	128	183	196	227	221	197	204	201	218	218	182	216	218	219
8	103	198	177	189	222	217	193	200	199	215	216	180	213	216
Subtotals:	353	573	604	632	635	613	593	616	632	613	611	611	648	652
Pct Chg:		62.3%	5.4%	4.6%	0.5%	-3.5%	-3.3%	3.9%	2.6%	-3%	-0.3%	0%	6.1%	0.6%
SDC:	0	0	0	0	0	0	0	0	0	0	0	0	0	0
Totals:	353	573	604	632	635	613	593	616	632	613	611	611	648	652
Capacity:	0	0	0	0	550	550	550	550	550	550	550	550	550	550
Open Seats:	-353	-573	-604	-632	-85	-63	-43	-66	-82	-63	-61	-61	-98	-102

- Inefficient windows & doors
- Kitchen inadequacies
- Incredibly difficult to navigate the building
- Finishes are worn and dated
- Inadequate clock/ bell system
- No site area for play fields
- Poor site circulation
- Not accessible
 - Certain areas are not accessible
 - Bathrooms are not compliant
 - Locker rooms are not compliant
- Electrical system issues
 - Minimal/ poor emergency lighting
 - Outdated fire alarm
 - Inadequate intercom system
 - Outdated exit signage
 - No automatic lighting control
- Limited emergency power
- No sprinkler system
- Boiler issues
- Mechanical systems issues throughout
- Poor electrical service
- Technology is poor/ antiquated

Building: **GOOD/ FAIR**

Systems: **POOR**

Cedar Cliff H.S.

Cedar Cliff High School

Grade	3 LS										9 science			44 classrooms	
	2012	2013	2014	2015	2016	2017	2018	2019	2020	2021	2022	2023	2024	2025	
9	375	348	357	356	363	404	404	398	397	403	413	397	360	402	
10	330	340	308	320	332	338	373	371	367	366	372	380	365	332	
11	293	299	305	307	311	323	326	358	356	352	352	356	365	350	
12	310	281	316	308	314	318	329	331	361	359	356	355	359	368	
Subtotals:	1308	1268	1286	1291	1320	1383	1432	1458	1481	1480	1493	1488	1449	1452	
Pct Chg:		-3.1%	1.4%	0.4%	2.2%	4.8%	3.5%	1.8%	1.6%	-0.1%	0.9%	-0.3%	-2.6%	0.2%	
SDC:	0	0	0	0	0	0	0	0	0	0	0	0	0	0	
Totals:	1308	1268	1286	1291	1320	1383	1432	1458	1481	1480	1493	1488	1449	1452	
Capacity:	0	0	0	0	1530	1530	1530	1530	1530	1530	1530	1530	1530	1530	
Open Seats:	-1308	-1268	-1286	-1291	210	147	98	72	49	50	37	42	81	78	

- Door and window issues in older portion
- Distinct have and have nots throughout
- Classroom wings are antiquated
- Technology updates throughout
- Inadequate clock/ bell system
- Accessibility issues throughout
 - Certain areas are not accessible
 - Bathrooms are not compliant
 - Locker rooms are not compliant
- Electrical system issues
 - Minimal/ poor emergency lighting
 - Outdated fire alarm
 - Inadequate intercom system
 - Outdated exit signage
 - No automatic lighting control
- Limited emergency power
- No full sprinkler system
- Boilers are not functional at all times
- Steam system is poor; constant leaks
- Poor coverage on site lighting
- Condensation build-up in steam tunnels

Building: **GOOD/ FAIR**
 Systems: **GOOD/ POOR**

Red Land H.S.

Red Land High School										5 LS	9 science	50 classrooms				
Grade	2012	2013	2014	2015	2016	2017	2018	2019	2020	2021	2022	2023	2024	2025		
9	346	290	314	313	309	278	307	311	303	294	321	316	263	293		
10	273	337	272	305	305	302	272	301	302	295	285	312	306	257		
11	267	242	308	259	284	284	282	254	280	281	274	266	291	285		
12	283	266	265	298	262	288	288	287	255	282	281	274	266	292		
Subtotals:	1169	1135	1159	1175	1160	1152	1149	1153	1140	1152	1161	1168	1126	1127		
Pct Chg:		-2.9%	2.1%	1.4%	-1.3%	-0.7%	-0.3%	0.3%	-1.1%	1.1%	0.8%	0.6%	-3.6%	0.1%		
SDC:	0	0	0	0	0	0	0	0	0	0	0	0	0	0		
Totals:	1169	1135	1159	1175	1160	1152	1149	1153	1140	1152	1161	1168	1126	1127		
Capacity:	0	0	0	0	1550	1550	1550	1550	1550	1550	1550	1550	1550	1550		
Open Seats:	-1169	-1135	-1159	-1175	390	398	401	397	410	398	389	382	424	423		

- Door and window issues in older portion
- Distinct have and have nots throughout
- Classroom wings are antiquated
- Technology updates throughout
- Inadequate clock/ bell system
- Accessibility issues throughout
 - Certain areas are not accessible
 - Bathrooms are not compliant
 - Locker rooms are not compliant
- Electrical system issues
 - Minimal emergency lighting
 - Inadequate intercom system
 - Inadequate exit signage
 - No automatic lighting control
- Limited emergency power
- No full sprinkler system
- Switchgear at pool area is poor
- Sounds systems are poor
- Poor site lighting/ coverage

Building: **POOR**

Systems: **POOR**

Lemoyne M.S.

[Lemoyne Middle School]

Grade												3 SCI		19 CR	
	2012	2013	2014	2015	2016	2017	2018	2019	2020	2021	2022	2023	2024	2025	
6	129	0	0	0	0	0	0	0	0	0	0	0	0	0	
7	139	0	0	0	0	0	0	0	0	0	0	0	0	0	
8	124	0	0	0	0	0	0	0	0	0	0	0	0	0	
Subtotals:	392	0	0	0	0	0	0	0	0	0	0	0	0	0	
Pct Chg:		-100%	0%	0%	0%	0%	0%	0%	0%	0%	0%	0%	0%	0%	
SDC:	0	0	0	0	0	0	0	0	0	0	0	0	0	0	
Totals:	392	0	0	0	0	0	0	0	0	0	0	0	0	0	
Capacity:	0	0	0	0	570	570	570	570	570	570	570	570	570	570	
Open Seats:	-392	0	0	0	0	0	0	0	0	0	0	0	0	0	

- Inefficient windows & doors
- No technology
- Finishes are poor or non-existent
- Inadequate clock/ bell system
- Poor site lighting
- Building envelope issues (windows/ doors)
- Accessibility issues in parts of the building
- Odd site circulation
- Abandoned – not maintained
- Electrical system issues
 - Minimal/ poor emergency lighting
 - Poor fire alarm
 - Inadequate intercom system
 - Poor exit signage
 - No automatic lighting control
- Water heaters are broken
- No sprinkler system
- Boilers are not functional
- Mechanical systems issues throughout
- Poor electrical service

Building: **FAIR**
Systems: **POOR**

ACE & Transportation

ACE

- Finishes show wear and tear (outdated)
- Accessibility issues in some areas
- Classroom space in building not easily accessible
- Cooking kitchen is outdated
- Electrical system issues
 - Outdated site lighting
 - Outdated fire alarm
 - Inadequate intercom system
 - No automatic lighting control
 - Additional data outlets needed
- Mixture of mechanical systems; some very outdated and inefficient
- Mechanical unit in board room is extremely loud
- No sprinkler system

Transportation

- Transportation building tied to ACE for electrical services
- Energy inefficiencies in systems
- Electrical system issues
 - Outdated service bay lighting
 - No emergency power
 - Minimal emergency lighting
 - No automatic lighting control
- Mechanical system is outdated
- No sprinkler system throughout
- Wall bracing added where wall is pulling away from the building

	SCHOOL	CAPACITY	FUTURE CAPACITY	BUILDING	SYSTEMS	AC/ No AC	ACREAGE	21 st CENTURY LEARNING
1	Fishing Creek ES			POOR	POOR	NO A/C**	26.5 acres	
1	Lower Allen ES			POOR	POOR	NO A/C**	6.6 acres	
1	Newberry ES			POOR	POOR	NO A/C**	32.1 acres	
1	Rossmoyne ES			FAIR	POOR	NO A/C**	14.2 acres	
1	Fairview ES			FAIR	POOR	NO A/C**	33 acres	
3***	Red Mill ES			GOOD	FAIR	A/C	41 acres	
3	Highland ES			GOOD	GOOD	A/C	10 acres	
3	Hillside ES			GOOD	GOOD	A/C	18.5 acres	
3	Washington Heights			GOOD	GOOD	A/C	5.2 acres	
1	New Cumberland MS			POOR	POOR	PARTIAL A/C	3.5 acres	
2	Allen MS			FAIR	POOR	PARTIAL A/C	53 acres	
3***	Crossroads MS			GOOD	FAIR	A/C	30 acres	
	Lemoyne MS			POOR	POOR	NO A/C**	3.5 acres	
2*	Cedar Cliff HS			GOOD/ FAIR	GOOD/ FAIR*	A/C*	39 acres	
3	Red Land HS			GOOD/ FAIR	GOOD/ POOR	A/C	85 acres	